

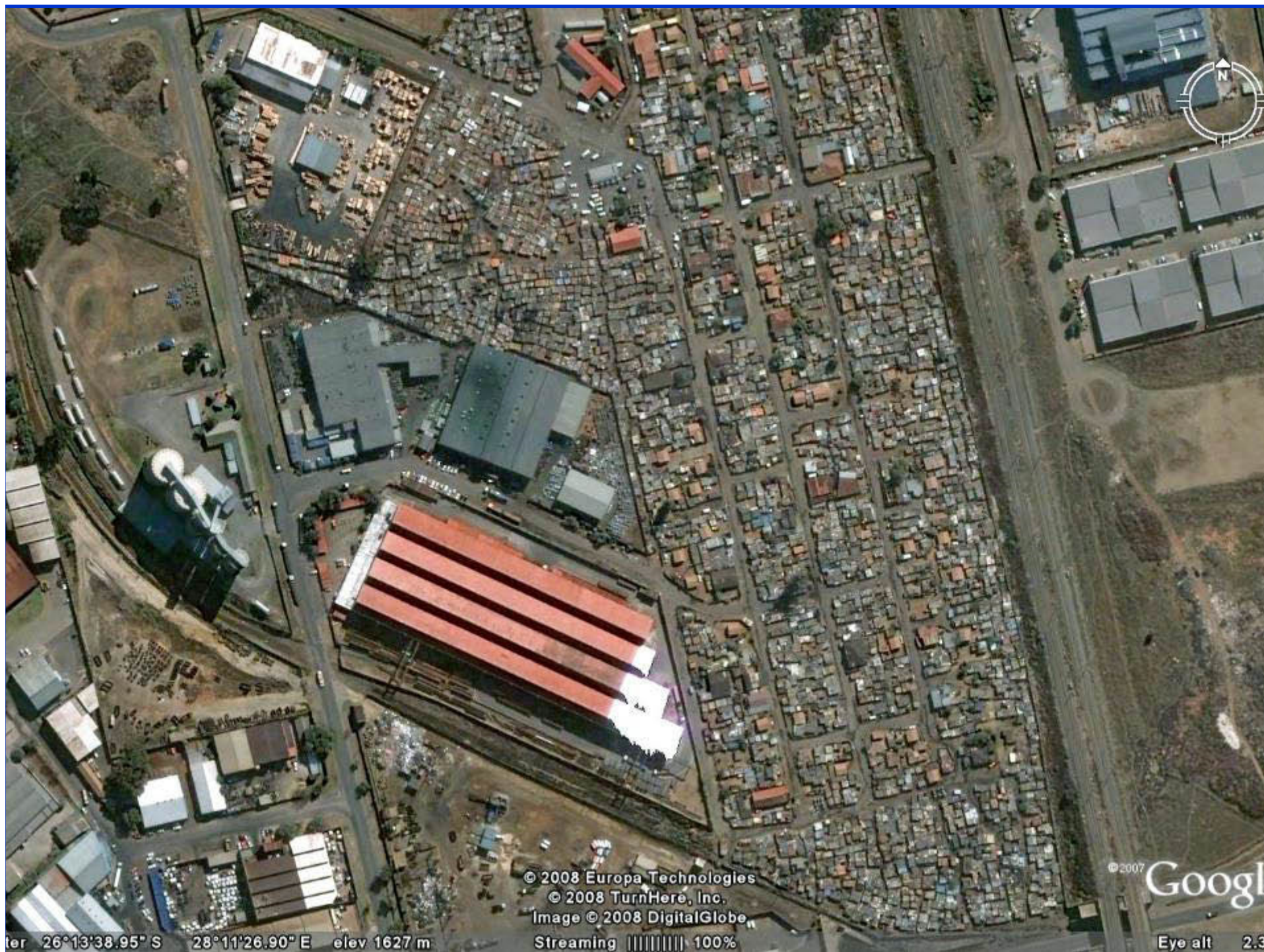
Outreach Projects Parish of Germiston



Photographs taken with the permission of the people concerned. Children photographed with permission of the School Governing Body and care givers concerned.

DUKATHOLE INFORMATION

- Informal settlement surrounded by factories & mining land.
- Negative environmental impact
- 80% unemployment; migrants from neighbouring countries.
- High levels of crime, violence prostitution, drugs & alcohol.



© 2008 Europa Technologies
© 2008 TurnHere, Inc.
Image © 2008 DigitalGlobe
Streaming ||||| 100%

© 2007 Google

Eye alt 2.35

ter 26°13'38.95" S 28°11'26.90" E elev 1627 m

DUKATHOLE INFORMATION

- Central section: 20-25,000 people on 1.5 kilometres
- Majority shacks with no basic amenities; water points & block loos.
- Extension 9 : RDP housing with shacks built on; 25,000 people on 3 kilometres.
- Good Hope extension 5: 10,000 people in 0.5 kilometres. Two common taps, no sewage, no electricity. Some Solar panels





BAMBANANI Home Based Care

(Support one another)

- Started 2002; Care givers & coordinator Nomsa Sikhari.
- Around 155 patients + orphans; good liaison with Child Advocates, School, clinic.
- Forms the 'Base' for the community from where people can be directed & assisted.
- Soup Distribution is to patients from this HBC & work with Care Givers & volunteers

Parish Soup Run & Gang

- Weekly soup, bread & fruit distribution in Dukatole Informal settlement since 2004.



- Work with the Care Givers from Home Based Care group Bambanani, walking to homes with food, other articles and in ministry.





CONTAINER DEVELOPMENT

- 1st container replaced old shack in 2004. Donation from Rotary World community service & Club. Refurbished by Akzo Nobel; base office for HBC
- 2nd container donated as crèche 2006 – Don Bailiff; August 2007- 3rd & 4th containers via Rotary W.S. for kitchen, counselling office & storeroom. Akza Nobel refurbished.
- Toilet block donated by Akza Nobel; Road closed off by Ekurhuleni Metro



LITTLE ANGELS CRECHE/ DAY **CARE CENTRE**

- At present 36 children: mainly orphans & vulnerable children.
- Handed back to community in 2013 after 10 years of total Diocesan & parish support.
- Still assist with maintenance, toys, food.







SUPPORT A CHILD

- Parish, Ministers Fraternal and Community outreach at Ekurhuleni Primary school started 2004.
- At present 200 orphaned & vulnerable children identified by school, HBC & child advocates on scheme. Others on waiting list to be screened.
- R100/month sponsored weekly food parcel distribution at school(+ holidays) Feed back to sponsors.
- Access grants, ID & counselling via CA's. Siblings & granny's access to food assistance.



Support-a-Child Project

Ekurhuleni Primary - Dukathole



Have you considered supporting this project by feeding a child for only R100 per month.

Contact:- Sue Beadon - 084 517 1034
or Mtr. Marlene - 082 644 4112



School Feeding Team 2015



Store Room & Counselling Room at School built November 2007.





Wheelchairs, Blankets, Buckets, Jerseys & caps



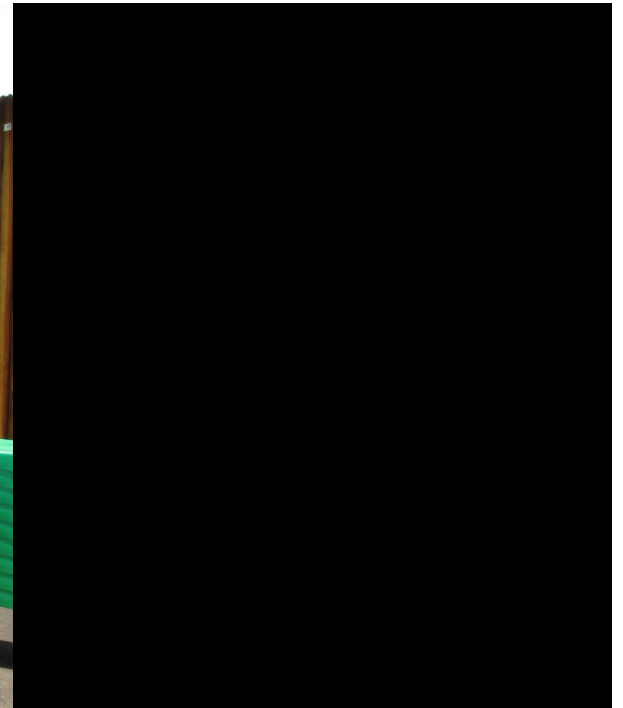




GOOD HOPE CRECHE

- 78 orphaned & vulnerable children. Child Advocate office in separate room.
- Shacks replaced December 2008; local community funding; Golden Walk & parish
- 3 teachers stipends paid; food subsidized
- Many siblings of school children on feeding scheme attend this creche.
- Container placed for community by Rotary & Parish funding 2014







ERROR: ioerror
OFFENDING COMMAND: image
STACK: